



cubicles.com

888-442-8242



BUSH Series A Desk



Your Office Will Never Be The Same!

HQ 24 West 39th Street New York City, NY 10018 Tel: 888.442.8242

Serving the Nation: Atlanta | Boston | Chicago | Dallas | Denver | Houston | Los Angeles | Miami | Philadelphia | San Diego | Tampa | Virginia | Washington DC

BBF fits your style, your budget, your business.

BBF fits your furniture needs with:



- Product lines for varying space requirements and work styles
- Styles and aesthetic choices for any budget
- Products tested to withstand 40-hour+ work weeks
- Products that perform anywhere you work
- Office desks, credenzas, hutches, and Filing drawers to accommodate any task.

BBF fits needs for value-added service:



- Nationwide delivery and installation to any zip code*
- Two-day order fulfillment, through our East and West coast distribution centers
- Accommodation of small orders and quick turnarounds
- Environmentally-conscious operating and manufacturing processes
- RTA Office Furniture delivers right to your door for a perfect DIY office furniture solution
- Full Assembly also available!

*Continental U.S.

“



Our small accounting firm needs budget office furniture. Is it too much to ask for professional space planning & installation for three offices?”

-Stuart, Traditional Small Business



“I need cool office furniture for our four person graphic design firm right away. Unfortunately everything I've seen that matches our aesthetic is way out of our price range”

- Angela, Non-Traditional Small Business



“As Facilities Manager I set up 8-10 telecommuter remote office locations monthly for around \$ 1500 each.”

-Whitney, Remote Office Environment



I'm launching my own business and I need high-quality home office modular furniture for a professional, home-based office.”

- Brandon, Office@Home Environment

”



cubicles.com

888-442-8242

BUSH Series A Desk



BUSH Series A Desk is a simple, blue collar workhorse.

It offers the ultimate in straightforward, no-frills utility and go-anywhere versatility. When it's time to roll up your sleeves and get things done, think Series A.



BUSH BUSINESS FURNITURE



Hansen Cherry Finish
(4) 42"W Corner Desk, (4) 42"W Corner Overhead,
(4) 36"W Desk, (4) Mobile Pedestal (B/B/F), (4) 24"W Piler/Filer



cubicles.com

888-442-8242

BUSH Series A Desk

- Comprehensive
- Freestanding and modular – easily added to
- Highly utile
- DIY
- Scalable
- Steely and sturdy



bbf

BUSH BUSINESS FURNITURE

BUSH Series A Desk Fits your function



Natural Cherry Finish
48"W Corner Desk, 48"W Desk, 36"W Desk,
36"W 2-Drawer Lateral File, Mobile Pedestal (F/F)
Optional Accessories Shown: Pencil Drawer, Articulating Keyboard Tray

What kind of office do you need?

How will you use your furniture?

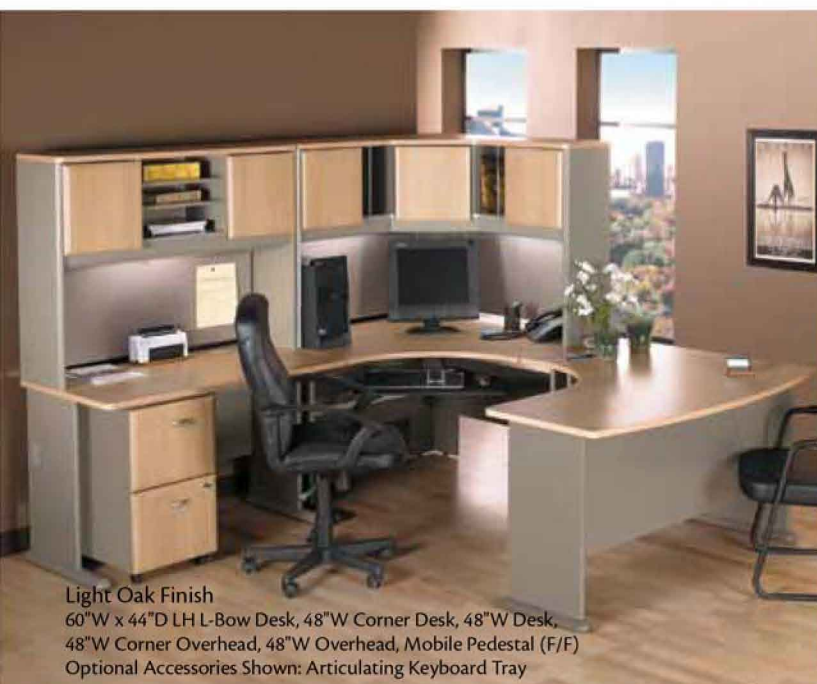
Bush Series A furniture features a range of options
from a single desk to multiple workstations.

Choose a pre-configured typical or have
a custom space plan completed free.



Pewter Finish

(8) 48"W Corner Desk, (8) 48"W Corner Overhead, (6) 48"W Desk, (6) 48"W Overhead, (8) 36"W Desk, (8) 36"W Overhead, (8) Mobile Pedestal (F/F), (4) 36"W 2-Drawer Lateral File, (2) 72"W Universal Freestanding Peninsula
Optional Accessories Shown: (6) Universal Keyboard Shelf



Light Oak Finish

60"W x 44"D LH L-Bow Desk, 48"W Corner Desk, 48"W Desk, 48"W Corner Overhead, 48"W Overhead, Mobile Pedestal (F/F)
Optional Accessories Shown: Articulating Keyboard Tray



Natural Cherry Finish
(7) 60"W Desk



BUSH Series A Desk Features

- Multiple finishes match individual style preferences
- Freestanding, modular design allows for virtually limitless layout options
- Open leg design to allow movement between desks
- Heavy-duty full-extension suspensions on file drawers
- This ready-to-assemble product line is a smart option for those who require moderately priced furniture designed to withstand the rigors of a 40-hour+ work week
- Meets ANSI/BIFMA standards for safety and performance
- Commercial quality backed by 10-year manufacturer's warranty
- FREE space-planning assistance is available



Overhead storage



Full-extension ball-bearing suspensions on file drawers



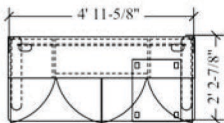
Leg and desktop grommets

BUSH Series A Furniture

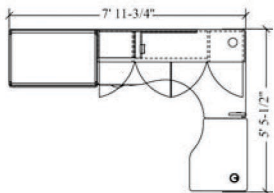
Office Typicals



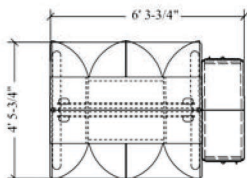
Qty.	Item
1	60"W Desk
1	60"W Overhead
1	Mobile Pedestal (B/B/F)



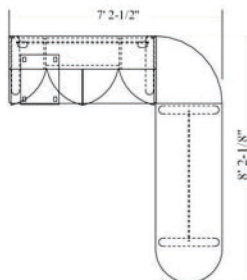
Qty.	Item
1	Expandable Single Pedestal Corner Desk (B/F)
1	30"W Transitional Bridge
1	60"W Overhead
1	36"W 2-Drawer Lateral File



Qty.	Item
2	60"W Desk
2	60"W Overhead
2	Vertical Locker



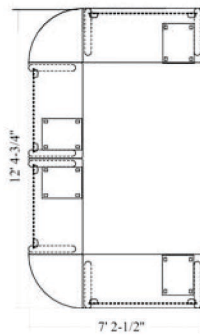
Qty.	Item
1	60"W Desk
1	60"W Overhead
1	27"W Corner Connector
1	72"W Universal Freestanding Peninsula
1	Mobile Pedestal (B/B/F)





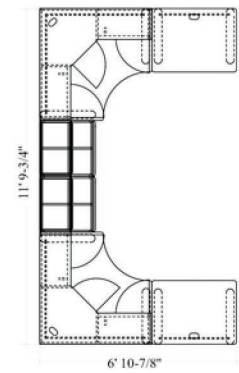
Qty. Item

- | | |
|---|-------------------------|
| 2 | 60"W Desk |
| 2 | 48"W Desk |
| 2 | 27"W Corner Connector |
| 2 | Mobile Pedestal (B/B/F) |
| 2 | Mobile Pedestal (F/F) |



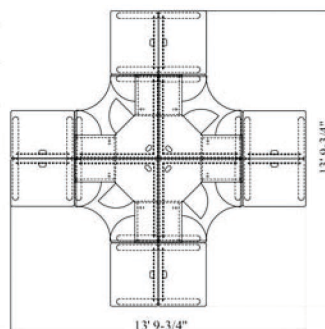
Qty. Item

- | | |
|---|----------------------|
| 2 | 48"W Corner Desk |
| 2 | 48"W Corner Overhead |
| 2 | 24"W Piler/Filer |
| 2 | 24"W Overhead |
| 2 | 36"W Desk |



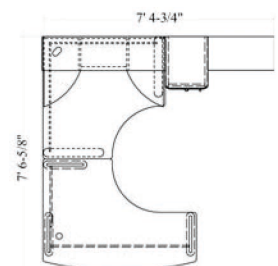
Qty. Item

- | | |
|---|---------------------|
| 4 | 48"W Corner Desk |
| 4 | 48" Corner Overhead |
| 8 | 36"W Desk |



Qty. Item

- | | |
|---|---------------------------|
| 1 | 60"W x 44"D RH L-Bow Desk |
| 1 | 48"W Corner Desk |
| 1 | 48"W Corner Overhead |
| 1 | Vertical Locker |
| 1 | 26"W 5-Shelf Bookcase |



BUSH Series A Furniture

Work Surfaces and Extensions



60"W x 44"D RH L-Bow Desk

29 7/8"H x 59 3/8"W x 43 3/8"D

60"W x 44"D LH L-Bow Desk

29 7/8"H x 59 3/8"W x 43 3/8"D



Expandable Single Pedestal
Corner Desk (B/F)

29 7/8"H x 60" - 71"W x 36"D



48"W Corner Desk

29 7/8"H x 47 1/4"W x 47 1/4"D



72"W Universal
Freestanding Peninsula

29 7/8"H x 71 1/4"W x 26 7/8"D



42"W Corner Desk

29 7/8"H x 41 3/8"W x 41 3/8"D



27"W Corner Connector

1"H x 26 7/8"W x 26 7/8"D



72"W Desk

29 7/8"H x 71 3/8"W x 26 7/8"D

60"W Desk

29 7/8"H x 59 3/8"W x 26 7/8"D

48"W Desk

29 7/8"H x 47 3/8"W x 26 7/8"D

36"W Desk

29 7/8"H x 35 3/8"W x 26 7/8"D



30"W Transitional Bridge

29 7/8"H x 29 1/2"W x 26 7/8"D

Compatible with Expandable
Single Pedestal Corner Desk
(B/F) only

BUSH Series A Furniture

Overhead Storage



48"W Corner Overhead

36 3/8"H x 47 1/4"W x 47 1/4"D



42"W Corner Overhead

23 3/8"H x 40 3/4"W x 40 3/4"D



72"W Overhead

36 3/8"H x 71 3/8"W x 13 3/8"D



60"W Overhead

36 3/8"H x 59 3/8"W x 13 3/8"D



48"W Overhead

36 3/8"H x 47 1/4"W x 13 3/8"D



36"W Overhead

36 3/8"H x 35 3/8"W x 13 3/8"D



24"W Overhead

36 3/8"H x 23 3/8"W x 13 3/8"D



cubicles.com

888-442-8242

BUSH Series A Desk

BUSH Series A Furniture Filing/Storage



Mobile Pedestal (B/B/F)
27 $\frac{7}{8}$ "H x 15 $\frac{3}{4}$ "W x 20 $\frac{1}{4}$ "D



Mobile Pedestal (F/F)
27 $\frac{7}{8}$ "H x 15 $\frac{3}{4}$ "W x 20 $\frac{1}{4}$ "D



36"W 2-Drawer Lateral File
29 $\frac{7}{8}$ "H x 35 $\frac{3}{4}$ "W x 23 $\frac{3}{8}$ "D



Vertical Locker (Tall)
66 $\frac{1}{8}$ "H x 16 $\frac{1}{8}$ "W x 20 $\frac{3}{8}$ "D



24"W Piler/Filer
29 $\frac{7}{8}$ "H x 23 $\frac{3}{8}$ "W x 23 $\frac{3}{8}$ "D



26"W 5-Shelf Bookcase
66 $\frac{1}{4}$ "H x 25 $\frac{3}{8}$ "W x 13 $\frac{3}{8}$ "D

BUSH Series A Furniture Conference Tables



42" W Round
Conference Table
29 $\frac{7}{8}$ "H x 41 $\frac{1}{2}$ "W x 41 $\frac{1}{2}$ "D



82"W x 35"D Racetrack
Conference Table
29 $\frac{7}{8}$ "H x 81 $\frac{1}{8}$ "W x 34 $\frac{1}{2}$ "D

BUSH Series A Furniture Finish Options



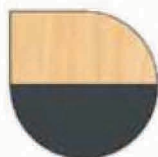
White Spectrum
with Pewter*

*Pewter Swirl Door Fronts

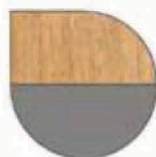


White Spectrum
with Slate Gray*

*Slate Linen Door Fronts



Beech with
Slate Gray



Light Oak
with Sage



Natural Cherry with
Slate Gray



Hansen Cherry
with Galaxy



Sienna Walnut
with Bronze

BUSH Series A Furniture Accessories



Articulating
Keyboard Tray
3 $\frac{3}{8}$ "H x 24 $\frac{3}{4}$ "W x 19 $\frac{1}{2}$ "D



Deluxe Articulating
Keyboard Tray
1 $\frac{1}{4}$ "H x 27"W x 11"D



Universal Keyboard Shelf
4"H x 30 $\frac{3}{8}$ "W x 16 $\frac{3}{8}$ "D



Pencil Drawer
2 $\frac{1}{2}$ "H x 26 $\frac{3}{8}$ "W x 15 $\frac{3}{8}$ "D



Multi-purpose Drawer
w/Drop Front
3 $\frac{3}{8}$ "H x 27 $\frac{1}{4}$ "W x 17 $\frac{3}{8}$ "D



Monitor Arm w/Post
20 $\frac{1}{2}$ "H x 12 $\frac{3}{8}$ "W x 14"D



Data/Power Hub
2 $\frac{3}{8}$ "H x 5 $\frac{1}{2}$ "W x 6 $\frac{3}{8}$ "D



Task Light
1 $\frac{1}{2}$ "H x 23 $\frac{3}{8}$ "W x 3 $\frac{1}{2}$ "D



CPU Holder
22 $\frac{3}{8}$ "H x 9 $\frac{1}{4}$ "W x 14 $\frac{3}{8}$ "D



Where are You? We Go There.



Bush Business Furniture is selected specifically for its ease in a smooth delivery right to your office door, packed with care and ready to assemble. (RTA Office Furniture)

- ✓ Small Orders
- ✓ Closed spaces, tight stairways
- ✓ Fast turnarounds
- ✓ Unusual hours

If DIY office furniture is not your thing, don't worry. We'll work with you to install a quality, professional office, anywhere. Within 12 days or less.*

*In the Continental U.S. Some locations may take longer

Standard Delivery/Self Install:

- ✓ RTA office furniture
- ✓ Product ships within 2 business days following order placement*
- ✓ Delivered within 3-5 business days in the lower 48 states (remote locations may take longer)
- ✓ Depending on order size, product is delivered to the threshold or room of choice
- ✓ Large or heavy orders that qualify for room of choice delivery will get a prescheduled appointment time

*Some restrictions apply

Premium Delivery/Fully Assembled:

Hassle-free delivery and installation

- ✓ Product ships within 2 business days following order receipt*
- ✓ Delivery within 12 business days in the contiguous United States (remote locations may take longer)
- ✓ Prescheduled appointment time for your convenience
- ✓ Furniture assembled and installed inside the room of choice to residential and business locations
- ✓ Service includes adjustment of desks, drawers and doors; as well as leveling, dusting and removal of all packaging materials – all in a single visit
- ✓ We assume the risk associated with furniture delivery and installation. From start to finish, we manage the order, handle the details and execute the follow-up. We go the last mile.

Customer Service/Sales Support

How can we help you?

Please call 888-442-8242 for assistance with questions regarding office furniture plans, product availability, parts replacement, warranty issues and general product information. Office hours are Monday-Friday, 9 am–6 pm ET excluding major holidays.



Warranty

LIMITED LIFETIME WARRANTY

- Quantum™
- Milano2
- Momentum
- Realize™
- Synchronize 2000
- Synchronize 1000
- Seating
 - Amp
 - Charge
 - Dash
 - Pace
 - Spur
- BBF Conference Tables

10 YEAR COMMERCIAL WARRANTY

- Aspen Tables
- Enterprise
- Office-in-an-Hour™
- ProPanels™
- Sector
- Series A
- Series C
- Syndicate
- Venture

10 YEAR LIMITED WARRANTY

- Seating
 - Activate
 - Advance
 - Attain
 - Energize
 - Invite

Environmental Sustainability

At BBF, we are proud to be good stewards of the environment, taking care to be environmentally conscious from the beginning to the end of our manufacturing process.

Some of our environmental initiatives include:

- CARB: All BBF products are compliant with CARB (California Air Resource Board) standards for reduced formaldehyde emissions
- EPPD ownstream Program (Composite Panel Association): More than 50% of panels purchased from EPP sources; board is 100% pre- or post-consumer recycled
- Energy Reduction: Reducing electricity consumption and improving machinery efficiency
- Landfill Reduction: Diversion of plastic waste away from landfills and improved recycling of plastic, cardboard, tin and scrap metal
- Corporate Recycling: Recycling plastic, paper and aluminum cans in our corporate offices
- Special Sustainability Teams: Tasked with improving efficiency and reducing waste in our manufacturing processes
- Ongoing Certifications: Actively participating in industry-related programs, such as BIFMA e3 Level and ISO 14001 82

Product Testing

We fit your demands for safety and durability. Our commercial products undergo rigorous testing in our sophisticated in-house testing laboratory, to ensure that they meet or exceed professional ANSI/BIFMA standards for safety and performance.

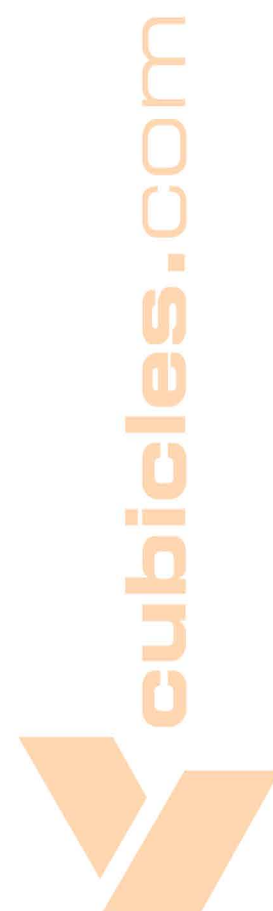
We test:

- Resistance to scratches, stains and abrasions
- Weight load
- Leg strength
- Stability/dislodgement
- Cycle testing on casters, hinges and drawer suspensions

The result of this obsessive attention to quality is that our products are ergonomically correct and compliant with state and federal health and safety guidelines.



es



Your Office Will Never Be The Same!

HQ 24 West 39th Street New York City, NY 10018 Tel: 888.442.8242

Serving the Nation: Atlanta | Boston | Chicago | Dallas | Denver | Houston | Los Angeles | Miami | Philadelphia | San Diego | Tampa | Virginia | Washington DC